

# EDuQua



## supports the quality improvement of education and training practices

**EDuQua** supports the **quality improvement of education and training practices** based in a technology tool COASTS to measure quality assurance in vocational education and training practices of the educational institutions, companies, etc.

COASTS is the technology platform used for the quality measuring program **EDuQua** and offer a lot of other functions to evaluate any standard that organization have to measure, monitor, evaluate and to perform.



*EDuQua* is an evaluation programme based on **EQAVET** criteria

*to raise the **quality and standards of vocational education** and to ensure that poor quality provision is either improved or removed.*

The intention is to offer **EDuQua** as a basic planning tool for quality improvement to a broad range of providers in the field of informal and vocational education. Quality improvement measures resulting from the use of **EDuQua** can then be shared, leading to an increasing level of cooperation amongst educational providers.

**EDuQua** is a **web-based self assessment program** which can be used to analyze the strengths and weakness of your quality assurance measures. The on-line questionnaire is designed to evaluate all aspects of your provision.

**EDuQua** can be used to support a self-assessment process and will assist in the development of clear and effective quality improvement plans.

The single questionnaire based on the perspectives of key stakeholders is a powerful tool, which will reduce the time and resources normally associated with the self-assessment process. This will enable providers to devote more of their resources to meeting: the needs of learners, employers, communities and trainers.



## A monitoring instrument to guarantee high quality in professional and vocational education and training

### What is EDuQua and what can EDuQua do for me?

The current regime of planning, funding bodies and quality inspectorates now places of much greater emphasis on a risk assessment, based on an evaluation of the capacity of the provider to maintain and improve quality.

**EDuQua** supports the improvement of formal and informal education and training practices. It analyzes the strengths and weaknesses of an organizations' performance to influence decision making and improve, change and develop good practice.

Questions within the **EDuQua self-assessment** tool have been developed so they can be answered at three different levels of organizations:

**Organization/Provider:** to give a strategic assessment of the strengths and weaknesses of quality improvement measures.

**Employer/Learner:** to give a customer assessment of the strengths and weaknesses of quality improvement measures.

Information from the three different perspectives above can be analyzed and compared to provide a complete view of the current position of the organization and what areas need to be improved on. The information can be used to show quality improvement trends over a period of time and can be compared with results from other countries.

### How can I access EDuQua?

Two year licenses are available to access the EDuQua online program, prices will vary dependent upon the number of users who will use the system. Each participant will receive a username and password which will enable them to use the program tool as often as required. The results can be printed and will include graphs and analysis tools which illustrate the 3 main areas of the assessment

- PLANNING
- IMPLEMENTATION
- EVALUATION
- IMPROVEMENT AND REVIEW

Comparison of the answer between the 3 scenarios:

- Provider-trainer
- Provider-learner
- Trainer-learner (public but anonymous)

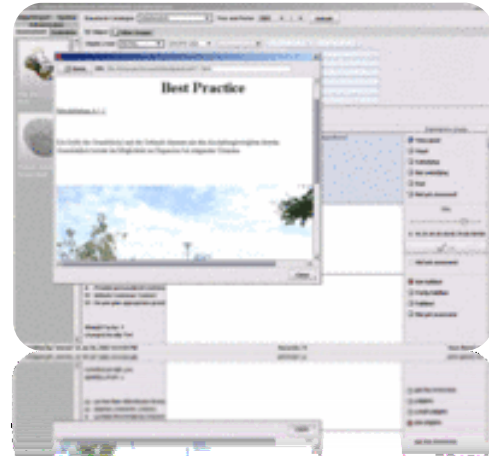
For further information visit [www.ilmty.com](http://www.ilmty.com) and o ask for a demonstration version of the program tool.



Please ask for more information sending us an e-mail to [info@ilmti.com](mailto:info@ilmti.com) or call us at

Spain 0034 656 800 223

Germany 0049 2203 359 29 82



### How to use EDuQua Program tool?

**EDuQua program** is an on-line self assessment tool which assesses the strengths and areas for improvement of an organizations quality processes and customer satisfaction. It has been designed to speed up the self assessment process and assist in the development of clear and effective quality improvement plans in professional and vocational education and training.

Results from the **on-line questionnaire** can be downloaded and printed as reports. This enables organizations to develop clear statements of actions which can be included in quality plans. A demonstration report is also available if required.

At registration organizations can apply for a username and password for themselves and colleagues. Once organizations have access to the system then evaluations can begin and take place as often as required throughout the license period.

One coaching – day is included in the license terms which will be carried out of our trainers in the company, training institute or public organizations.

Our programme facilitate

- BEST-PRACTICE comparison
- BENCHMARKING processes
- PLANNING QUALITY SELF ASSESSEMENTS
- CONTINUOUS IMPROVEMENT PROCESS IN TRAINING QUALITY
- MEASURING OF QUALITY OBJECTIVES IN THE PROFESSIONAL TRAINING PROCESS
- .....

Visualizations of continuous improvement progress in vocational education and training program.

We offer our large experience in quality assurance in vocational education and training area.



*We are a member of the i-MOVE network*

## OUR AWARDS



**SYSTEMS-LEADERSHIP – Methods to implement  
integrate management systems**



**EduQ<sub>ua</sub> – Evaluation tool for quality assessments in  
Education and VET**



**Integrate Quality Management**